

How to Export to EndNote



Unknown macro: 'iconmacro'

EndNote export

1. Locate and open the Research Data Australia data record you would like to export a reference for.
2. Click the 'Cite' button displayed in the data access section of the page. The Citation popout will be displayed.

The screenshot shows the dataset page for 'Palaeogeographic Atlas of Australia (a set of ten volumes)'. The page includes the Australian Government logo, the title, authors (Totterdell, J.M.; Cook, P.J.; Bradshaw, M.T.; Wilford, G.E.; Yeates, A.N.; Yeung, M.; Truswell, E.M.; Brakel, A.T.; Isem, A.R.; Olissoff, S.; Strusz, D.L.; Langford, R.P.), and a 'Dataset' label. A green button labeled 'Access the data' is visible, with a blue circle around the 'Cite' button below it. The 'Brief description' section provides details about the atlases compiled by AGSO between 1984-1996.

3. From the bottom of the Citation popout, select the version of EndNote you would like to export the reference to.

The 'Cite' popout window displays the following information: 'Copy and paste a formatted citation or use one of the links to import into a bibliography manager.' The citation text is: 'DataCite Totterdell, J.M. ; Cook, P.J. ; Bradshaw, M.T. ; Wilford, G.E. ; Yeates, A.N. ; Yeung, M. ; Truswell, E.M. ; Brakel, A.T. ; Isem, A.R. ; Olissoff, S. ; Strusz, D.L. ; Langford, R.P. (2001): Palaeogeographic Atlas of Australia (a set of ten volumes). .dataset. <http://pid.geoscience.gov.au/dataset/ga/35880>'. At the bottom, there are three buttons: 'EndNote', 'EndNote Web', and 'EndNote Help'. The 'EndNote' and 'EndNote Web' buttons are circled in blue.



Authors will be arranged as they are sorted under the record's title.

4. If you are importing to a desktop version of EndNote and you have configured your machine to open 'RIS' files with EndNote, the reference should be imported directly.

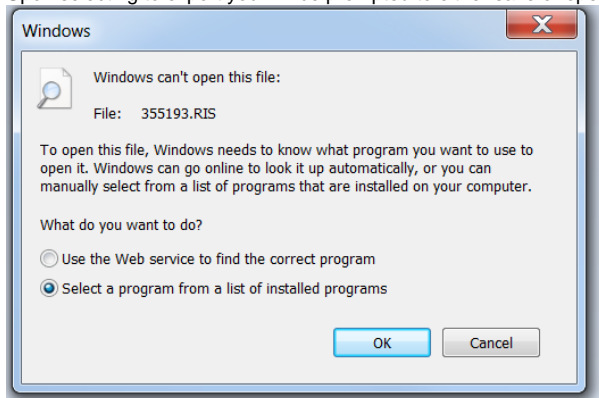
Configuring your computer to open 'RIS' files in EndNote.



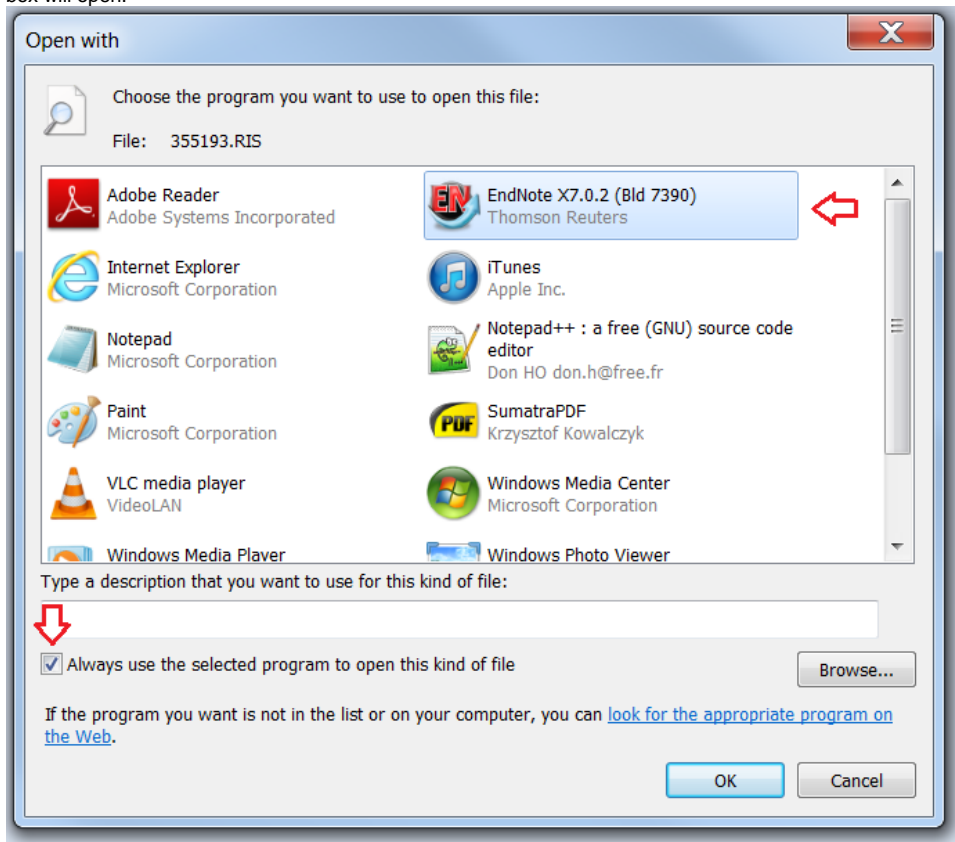
Unknown macro: 'iconmacro'

Windows

1. Upon selecting to export you will be prompted to either save or open the file. Select 'Open'.



2. In the Windows dialog select the option 'Select a program from a list of installed programs'. An 'Open with' dialog box will open.



3. Before locating EndNote in the list of options, ensure the 'Always use the selected program...' check box is selected.
4. Locate EndNote in the list of options, selected it and click 'Ok'. The reference should be imported into EndNote.



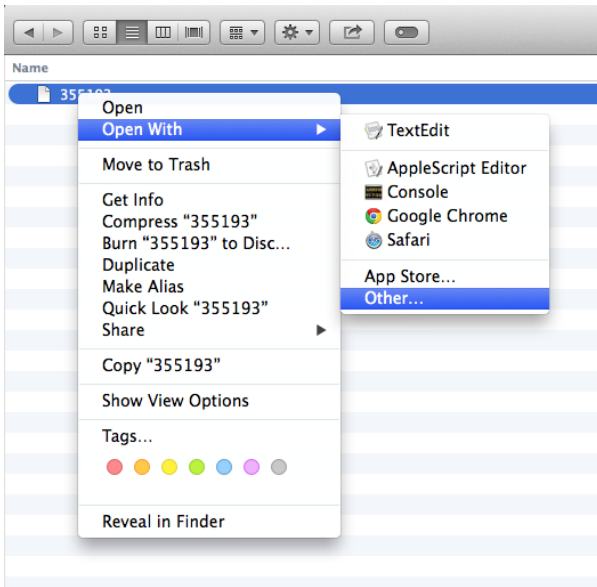
If EndNote is not listed you will need to use the 'Browse' button to locate it on your computer.



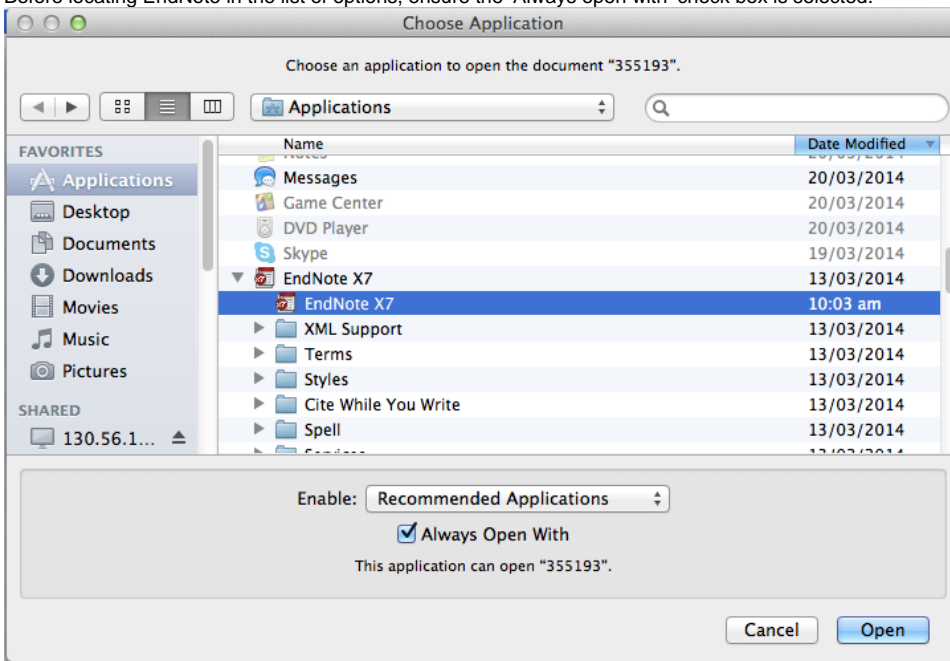
Unknown macro: 'iconmacro'

Mac

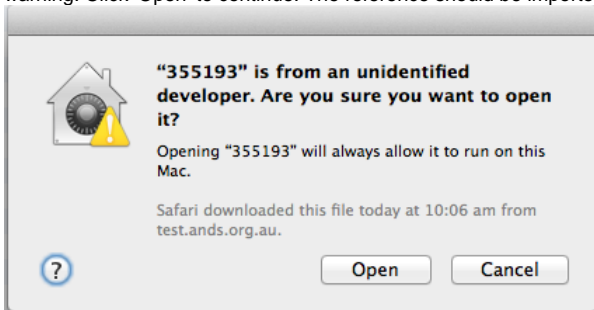
1. Upon selecting to export the file, it will be downloaded to your machine. Most likely in your 'Downloads' folder.
2. Navigate to the file in Finder, and while holding down the 'Control' key, click the file then select 'Open With > Other'. The 'Choose Application' dialog should be displayed.




- Before locating EndNote in the list of options, ensure the 'Always open with' check box is selected.



- Locate EndNote in the list of options, selected it and click 'OK'. Depending on your security settings you may be presented with a system warning. Click 'Open' to continue. The reference should be imported into EndNote.



 If EndNote is not listed you will need to locate it on your computer.



Unknown macro: 'iconmacro'

More information

- [Modifying the dataset reference type in EndNote X7 or X8](#)

[« Exporting Data References from RDA](#) [Modifying the dataset reference type in EndNote X7 or X8](#) »